



We are the only supplier of Commando & Dominator parts using the original factory drawings. Our products are mostly made in England and to original specification. We also offer Norton Rotary spares, factory service manuals and literature for **NORTON** and **TRIUMPH** motorcycles.

**INSIST ON GENUINE FACTORY PARTS PACKAGED WITH THIS LOGO**



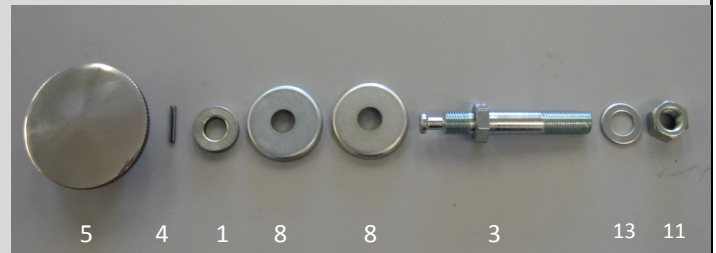
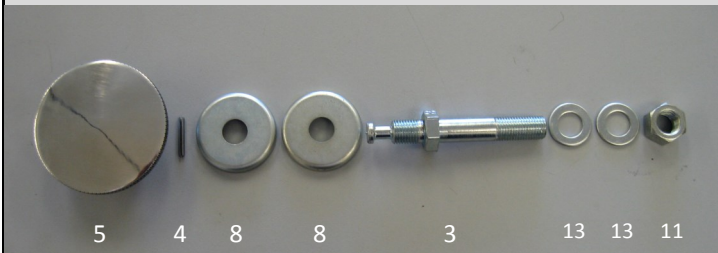
**THESE SUSPENSION PARTS ARE AVAILABLE FROM STOCK:-**



06.7865 Slimline Featherbed

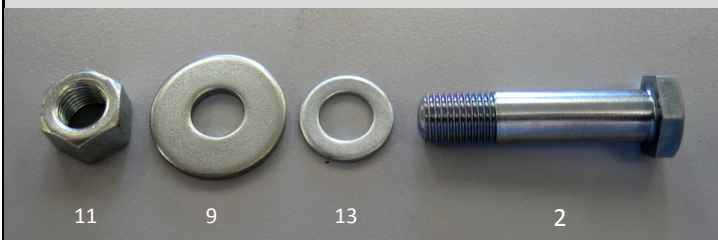
06.0461 Early Commando 1968-70

06.2179 Late Commando 1971 onwards



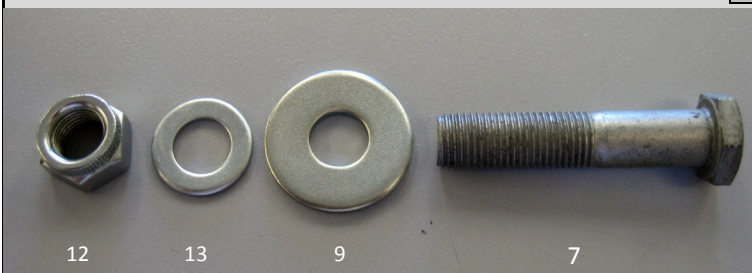
Pre-Mk3 Commando Top Suspension Fixings (2 sets per bike, 1 set on Mk3)

Mk3 Commando Top Suspension Fixings, left side only (1 set per bike)

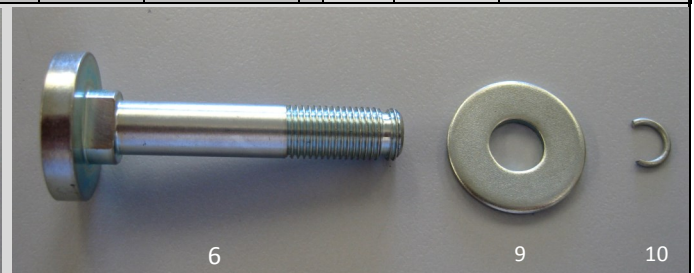


Pre-Mk3 Commando Bottom Suspension Fixings (2 sets per bike)

Item	Part	Description	Item	Part	Description
1	03.3195	Spacer	7	06.6490	Bolt
2	06.0463	Bolt	8	06.7612	Lipped washer
3	06.0465	Bolt	9	06.7808	Plain washer
4	06.0695	Roll pin	10	06.8070	Circlip
5	06.4009	Seat knob	11	14.0303	Nut
6	06.6434	Bolt	12	14.1303	Nut
			13	60.2322	Plain washer



Mk3 Commando chain side bottom fixings (1 set per bike)



Mk3 Commando caliper side bottom fixings (1 set per bike)

Please refer to our Website for Pricing: [www.andover-norton.co.uk](http://www.andover-norton.co.uk)

**NOW BUY GENUINE NORTON FACTORY SPARES FROM OUR SALES COUNTER IN ANDOVER, HAMPSHIRE**

Order on-line: [www.andover-norton.co.uk](http://www.andover-norton.co.uk) tel: 01264 359 565 email: [office@andover-norton.co.uk](mailto:office@andover-norton.co.uk)

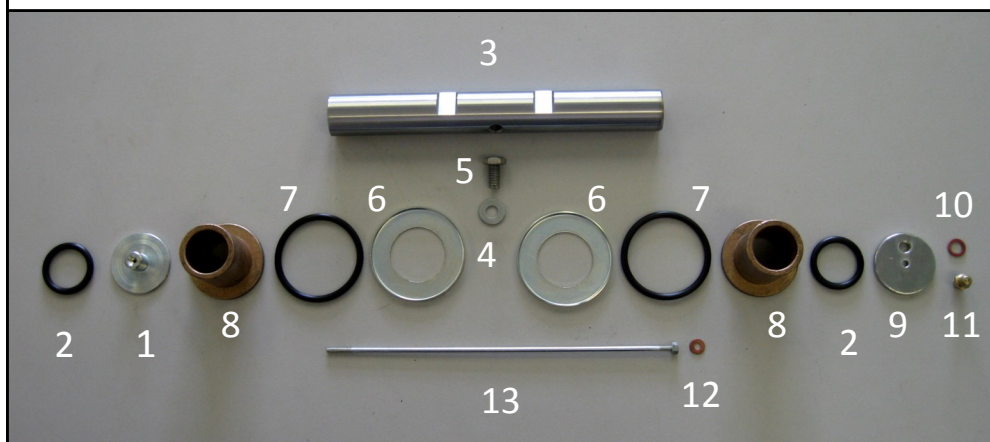


We are the only supplier of Commando & Dominator parts using the original factory drawings. Our products are mostly made in England and to original specification. We also offer Norton Rotary spares, factory service manuals and literature for **NORTON** and **TRIUMPH** motorcycles.

**INSIST ON GENUINE FACTORY PARTS PACKAGED WITH THIS LOGO**

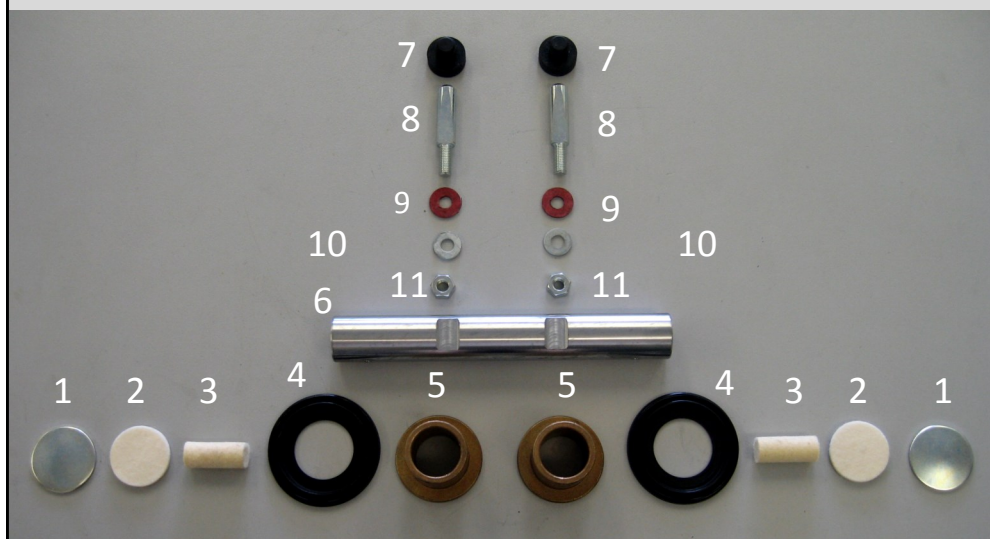


**THESE SWINGING ARM PARTS ARE AVAILABLE FROM STOCK:-**



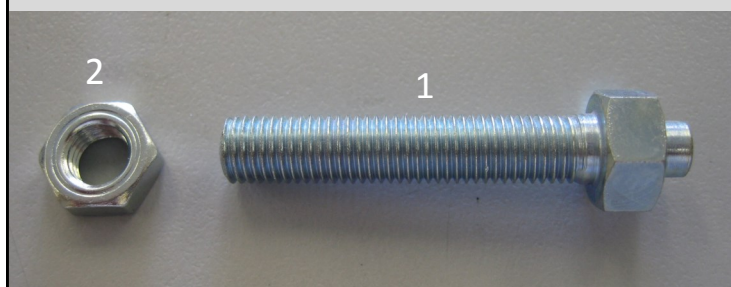
Commando Swinging Arm parts (not Mk3)

Item	Part	Description	Qty.
1	06.0869	End cap	1
2	06.0448	O ring	2
3	06.0453	Pivot spindle	1
4	60.2320	Washer	1
5	14.0101	Bolt	1
6	06.0446	Dust cover	2
7	06.0449	O ring	2
8	06.0447	Bearing	2
9	06.0868	End cap	1
10	06.4061	Nipple washer	1
11	06.3411	Nipple	1
12	06.0871	Washer	1
13	06.0873	Rod	1

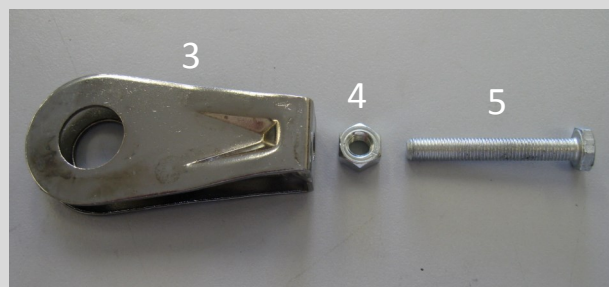


Commando Swinging Arm parts (Mk3)

Item	Part	Description	Qty.
1	06.6623	Welch plug	2
2	06.5229	Disc wick	2
3	06.5230	Oil wick	2
4	06.5227	Seal Assy.	2
5	06.5320	Bearing	2
6	06.4699	Pivot spindle	1
7	06.4772	Rubber plug	2
8	06.4700	Cotten	2
9	04.5057	Fibre washer	2
10	60.2320	Washer	2
11	14.0301	Nut	2



Commando Drive Chain Adjuster parts (not Mk3)



Commando Drive Chain Adjuster parts (Mk3)

Item	Part	Description	Qty.	Item	Part	Description	Qty.
1	06.0650	Adjuster	2	4	14.0301	Nut	2
2	06.0651	Nut	2	5	06.6405	Hex. Screw	2
3	06.6109	Adjuster	2				

Please refer to our Website for Pricing: [www.andover-norton.co.uk](http://www.andover-norton.co.uk)

**NOW BUY GENUINE NORTON FACTORY SPARES FROM OUR SALES COUNTER IN ANDOVER, HAMPSHIRE**

Order on-line: [www.andover-norton.co.uk](http://www.andover-norton.co.uk) tel: 01264 359 565 email: [office@andover-norton.co.uk](mailto:office@andover-norton.co.uk)